

GET YOUR POUR ON

PAINT | TOOLS | SUPPLIES | TECHNIQUES | TIPS & TRICKS

folksart
DRIZZLETM

EXPLORE, PLAY, NO RULES, LET IT FLOW

Read on for everything you need to know about Drizzle!

What is Drizzle?

There are no limits to what you can create with FolkArt Drizzle Pre-Mixed Fluid Acrylic Paint. This premium, high-flow paint is a gloss acrylic pouring paint that can be easily applied to a variety of surfaces. Our unique formula allows colors to stay separated and reduces over-blending, leading to muddy colors. Great for all fluid art techniques. This water-based, non-toxic formula is perfect for indoor and outdoor projects and requires minimal surface prep. Apply this fluid paint directly onto a clean dry surface with a variety of techniques. Express yourself through loose and colorful art with these ready-to-pour colors!



Tools

Pair any Drizzle paints with Drizzle tools to flow, pour, spin, splatter, drip, and swipe your vivid color combinations with ease. There are no two pours that are alike! Experience the freedom of expression through your fluid paintings and creations. Clean up is easy with this fluid paint, simply rinse while wet with soap and water.

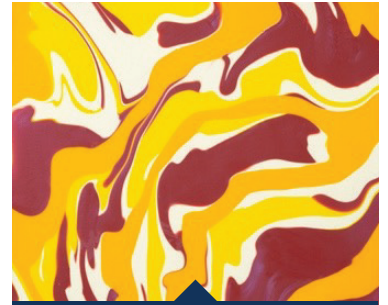
Specialty Paints and Kits

Drizzle comes in a variety of great specialty formulas as well as handy kits for easy color coordinated projects.

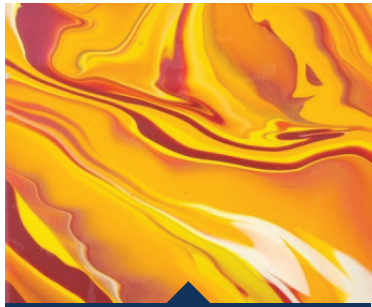


LET CREATIVITY FLOW!

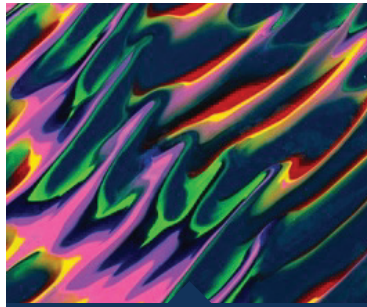
Explore the pour with FolkArt Drizzle! There are a variety of ways to create with these ready-to-pour colors. This paint is great for all fluid art techniques including the ones below.



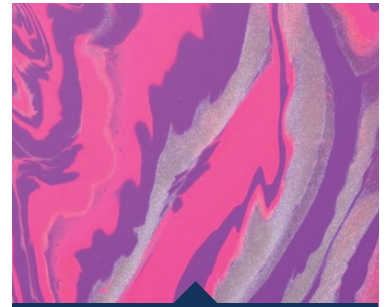
CLEAN POUR



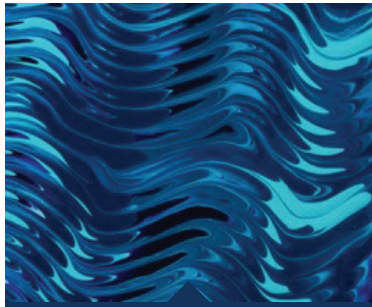
DIRTY POUR



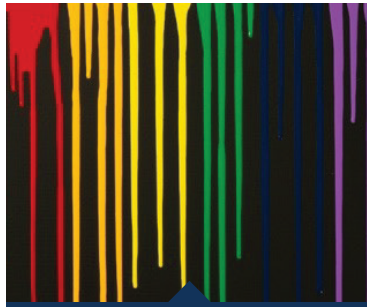
7 SLOTTED CUP



3 SLOTTED CUP



COMB TOOL



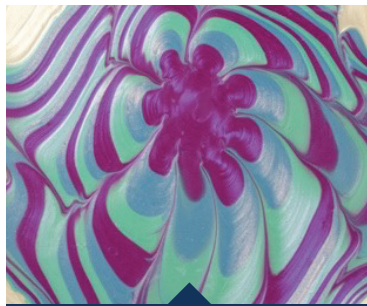
DROPPER



SPINNER



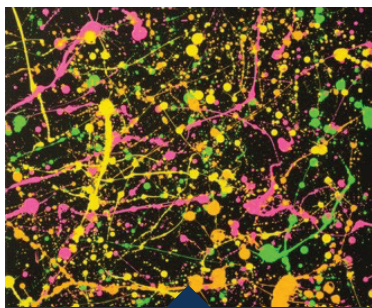
VOLCANO



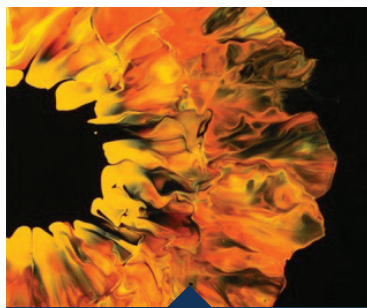
STRAINER



STAR CUP



SPLATTER



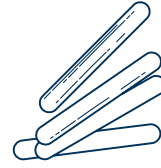
HAIR DRYER



GALAXY

ADDITIONAL SUPPLIES

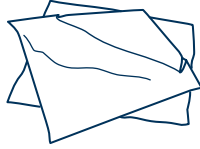
In addition to high-quality pouring paint and tools, you'll need a few extra supplies. Stock up on the basics to create beautiful fluid art. Check out the list!



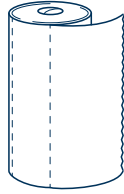
CRAFT STICKS



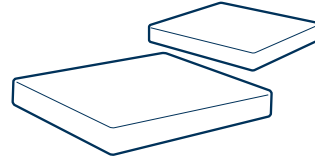
PLASTIC CUPS



WIPES



PAPER TOWELS



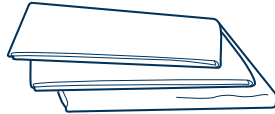
PAINTING SURFACES



GLOVES



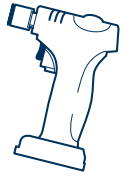
KRAFT PAPER



TARP OR DROP CLOTH



SILICONE OIL



BUTANE TORCH

*Please note: Make sure to protect your area with kraft paper or a tarp before beginning your project.



TIPS AND TRICKS

Make sure to prep your painting space by covering your table and surrounding work area with kraft paper. Keep paper towels and baby wipes on hand. Clean up is easy with this fluid paint, simply rinse with soap and water.

- Depending on your project, we recommend letting your project dry for several days.
- Loosely paint the sides and outer edge of your canvas to keep bare spots from showing through your pour.
- Start out with a palette consisting of cool or warm tones with white for a reliable color combination.
- Convenient flip-top cap. Use the paint right out of the bottle for a straight/clean pour.
- Place push pins under each corner of your canvas to keep it elevated off of work surface & out of excess paint.
- Pour over a reusable non-stick baking pan. After your pour, simply peel up and discard remaining paint.
- Use silicone cups for dirty pours, less waste.
- No need to seal or add a varnish, Drizzle dries to a glossy finish.
- Use tools in the Drizzle line to jumpstart design creation.
- Clean tools right after use with warm soapy water.
- Clean tight corners of tools using a bottle, straw, or brush.
- Use a butane torch about 4 inches above the canvas to eliminate air bubbles.
- Experiment with color palettes by mixing specialty formulas to create unique fluid art.
- Fluid art is messy! Cover your entire workspace and anything you don't want covered in paint.
- Do not shake bottles before pouring. This can create bubbles in Drizzle paint. Instead, roll on a table or flat surface if any paint settling or separation occurs.
- Allow your pours to dry thoroughly before displaying/hanging.
- If you don't like your pour, feel free to pour another design right over it.
- The Drizzle paint spinner can be used for traditional spin-art, but it also works great as a general workstation.